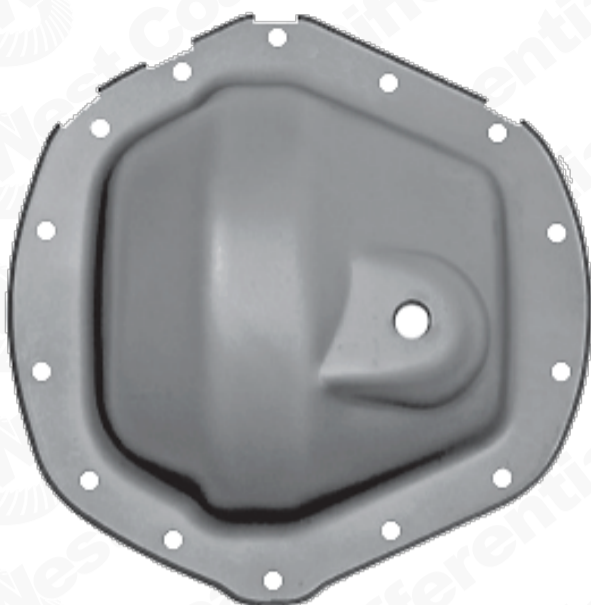


# AAM 11.5" / 11.8" Chrysler / GM Rear



MFG by: American Axle & Manufacturing

## Specifications

Ring Gear Diameter	11.5" / 11.8"
Ring Gear Bolts - (14mm X 1.5" LH)	12 / 16
Cover Bolts	14
Pinion Splines	30
Carrier Breaks	None
Axle Splines	30

## Common Applications

### Dodge / RAM:

- RAM 2500 2003+
- RAM 3500 2003+
- RAM 3500 (11.8") 2014+

### Chevrolet / GM:

- Silverado, Sierra, Sierra Denali, 1999+
- Full Size Truck - 2500 HD, 3500 HD WT
- Light Duty P/U - 25/35 Series
- Suburban, Yukon XL, Escalade ESV
- Full-size Utility - 200/2500, 300/3500

## Setup Specs

New Pinion Bearing Preload - inch/lbs	25-45
Used Pinion Bearing Preload - inch/lbs	10-20
Backlash (.001 in)	5-7
RG Bolt Torque	175
Bearing Cap Torque	175

To Buy Parts for this Application  
CALL

**(800) 510-0950**

**Order before 4PM (PST) and  
most parts ship out the SAME DAY!**

**View the Parts Catalog for  
AAM 11.5 and 11.8**



**West Coast Differentials**  
*We Make The Difference!*